



# HOW DOES PENN STATE USE STATE FUNDING?

## ONE COMMUNITY IMPACTING MANY

As a **top-30** research university, Penn State educates Pennsylvanians and is a major contributor to the state's economy. A rich land-grant legacy of teaching, research, and service enables educators to solve problems in Pennsylvania communities, while also answering questions on a global scale.

## WHAT IS THE ECONOMIC IMPACT OF THESE INVESTMENTS?

### PENN STATE IS AN ECONOMIC POWERHOUSE

contributing more than **\$11.6 billion** to the state's economy.\*

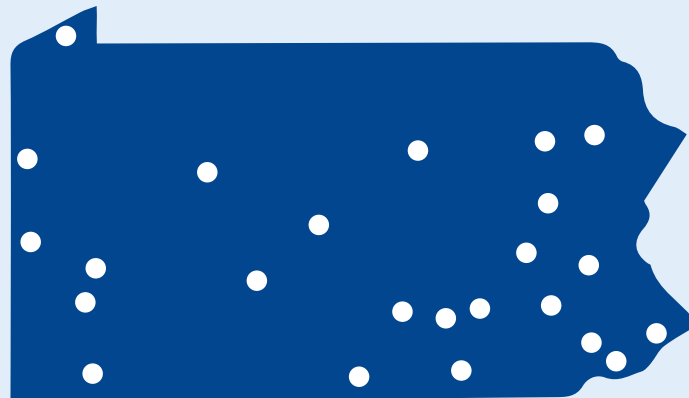
**For every \$1** in state support received, Penn State generates **\$1.24** in state tax revenue.

<p><b>MORE THAN</b> <b>\$11.6</b> <b>BILLION</b> <i>contributed to the Pennsylvania economy</i></p>	<p><b>PENN STATE WORKED WITH</b> <b>1,800+</b> <b>PA BUSINESSES</b> <i>in FY2023</i></p>	<p><b>SUPPORTS</b> <b>105,000+</b> <i>Pennsylvania jobs directly and indirectly</i></p>	<p><b>PENN STATE IS THE</b> <b>4th</b> <b>LARGEST</b> <i>non-government employer in PA (source: PA L&amp;I)</i></p>
---	--	---	---

### SPANNING THE COMMONWEALTH

## PENN STATE'S 24 CAMPUS LOCATIONS

spread the University's economic contributions into communities in all corners of Pennsylvania in a way that is unmatched by any other university in the Commonwealth.



Outside of University Park and Penn State Health, Penn State's locations across Pennsylvania combined for more than

## \$2 BILLION IN ECONOMIC CONTRIBUTIONS

with most of those impacts coming in the county in which each campus is situated.

\*Findings based on FY 2017 study, conducted using a model endorsed by the Association of Public Land-Grant Universities (APLU) and the American Association of Universities (AAU), to measure Penn State's annual contribution to Pennsylvania's economy.

**FOR ADDITIONAL INFORMATION ON PENN STATE'S FUNDING, RIGHT TO KNOW REPORTS, AND MORE PLEASE VISIT [PSU.EDU/ACCOUNTABILITY](http://psu.edu/accountability)**

**MICHAEL STEFAN**  
Vice President for Government and Community Relations  
117 Old Main  
University Park, PA 16802  
Phone: (814) 865-6563  
[mstefan@psu.edu](mailto:mstefan@psu.edu)

**SHEILAH BORNE**  
Associate Vice President of Governmental Health Relations  
Penn State Health  
PO Box 855  
100 Crystal A Drive  
Room 2321  
Hershey, PA 17033  
Phone: (717) 531-7549  
Fax: (717) 531-6999  
[sbornefuller@pennstatehealth.psu.edu](mailto:sbornefuller@pennstatehealth.psu.edu)

**ERIN WACHTER**  
Director of State Relations  
117 Old Main  
University Park, PA 18802  
Phone: (814) 865-6563  
[eyes154@psu.edu](mailto:eyes154@psu.edu)

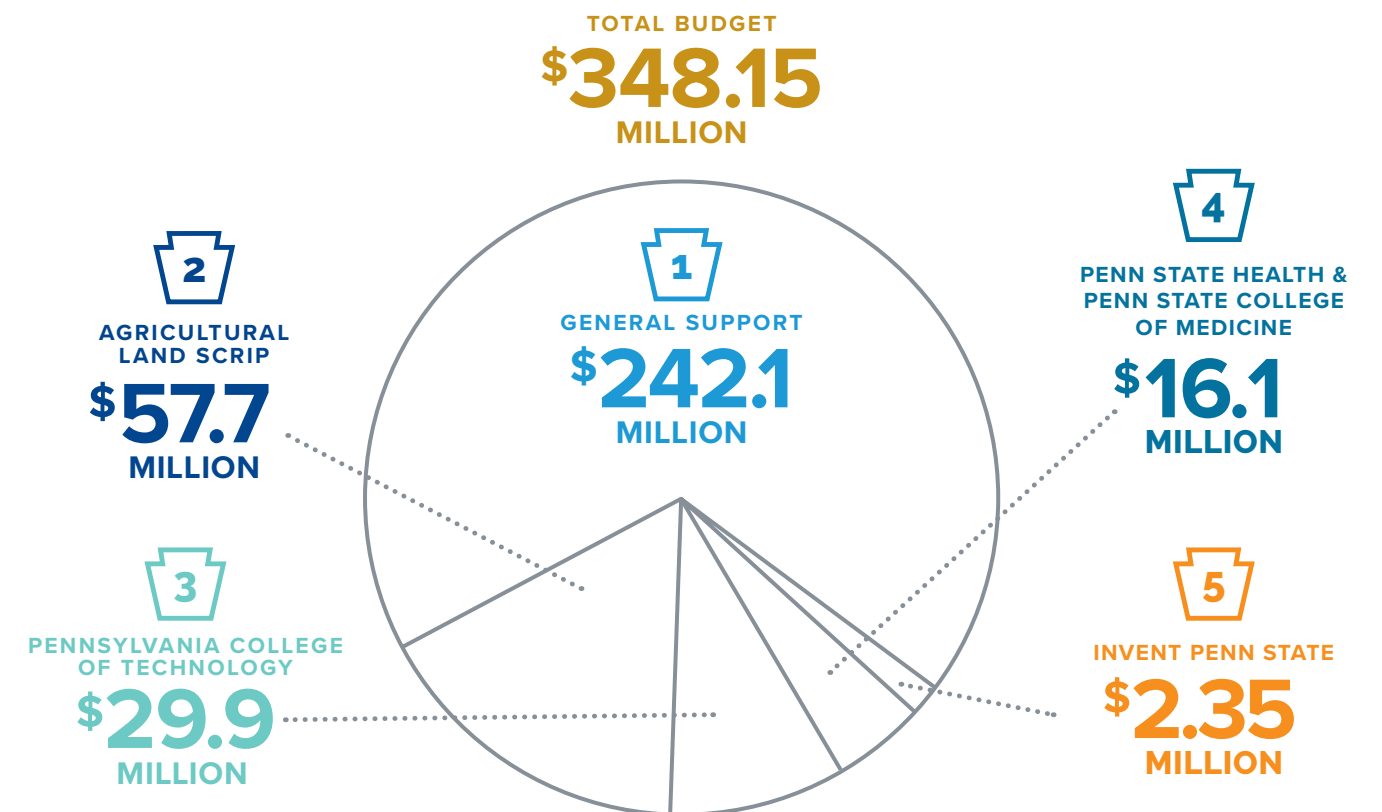
**JOSH EISNER**  
Associate Director of State Health Relations  
Penn State Health  
PO Box 855  
100 Crystal A Drive  
Room 2321  
Hershey, PA 17033  
Phone: (717) 531-6290  
Fax: (717) 531-6999  
[jeisner@pennstatehealth.psu.edu](mailto:jeisner@pennstatehealth.psu.edu)



Penn State is an equal opportunity, affirmative action employer, and is committed to providing employment opportunities to all qualified applicants without regard to race, color, religion, age, sex, sexual orientation, gender identity, national origin, disability or protected veteran status. Nondiscrimination: <http://guru.psu.edu/policies/AD85.html>

THIS PUBLICATION IS AVAILABLE IN ALTERNATIVE MEDIA ON REQUEST. Produced by the Penn State Department of University Marketing.

## COMMONWEALTH FUNDING IS APPROPRIATED TO PENN STATE IN FIVE WAYS:



*State appropriations are NOT USED for any athletic programs.*

## 1 GENERAL SUPPORT

The primary purpose of the General Support funding is to offset the cost of tuition for Pennsylvania resident students.

**We Are Penn State**

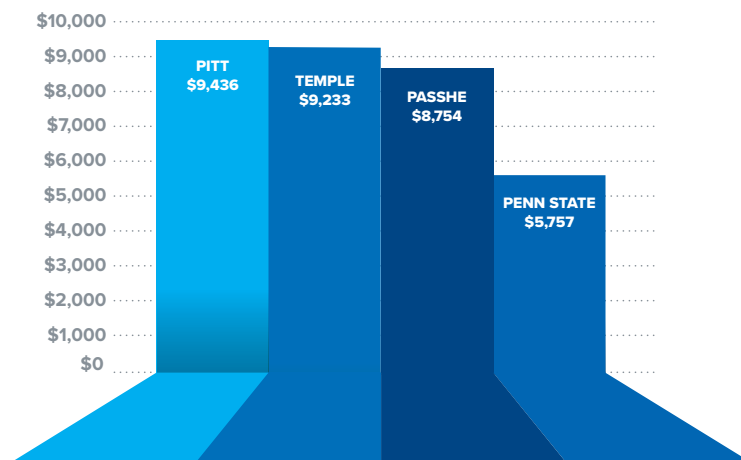
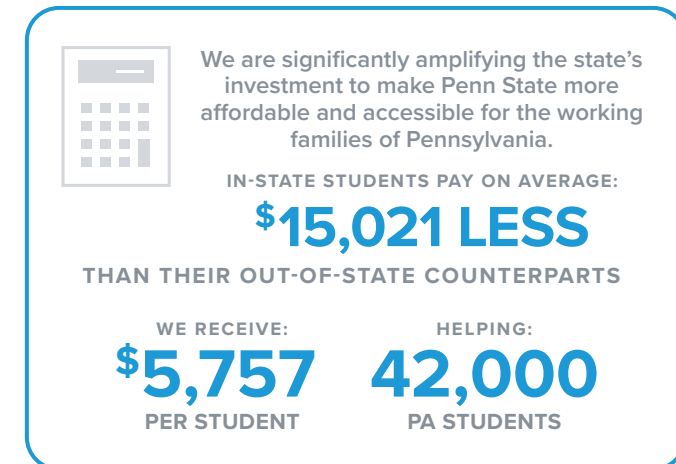
**96% of Pennsylvanians are within 30 miles of a Penn State campus.**

No other university can match this capacity.

Penn State is a valuable asset to the Commonwealth that provides a great return on investment.

## HOW DOES THIS COMPARE TO OTHER KEY PA UNIVERSITIES?

Penn State receives the **lowest** appropriation per PA student of the 3 largest state-related universities and the PASSHE system.



APPROPRIATION PER PA STUDENT (HEADCOUNT). BASED ON FALL 2022 NUMBERS.

## 2 AGRICULTURAL LAND SCRIP

The College of Agricultural Sciences Research and Penn State Extension programs help underpin Pennsylvania's agricultural, food, forestry, landscaping, and horticultural industry sectors that support **593,600 total jobs** and **\$32.8 billion** in total earnings, with a total economic output of **\$132.5 billion**.

### OFFERINGS AND STATISTICS:

- Providing access to research-based education when, where, and how its needed ([extension.psu.edu](http://extension.psu.edu))
- Offering thousands of in-person workshops, online courses, publications, and onsite consultations on topics that matter



### PRIORTIES INCLUDE:

- Addressing Invasive Species like Avian Influenza (HPAI)
- Safeguarding Animal and Human Health
- Improving Water Quality
- Providing Workforce Development and Non-Credit Credentials
- Advancing Climate-Smart Food Supply Chains and Commodities

EXTENSION PRESENCE IN **ALL 67** PENNSYLVANIA COUNTIES

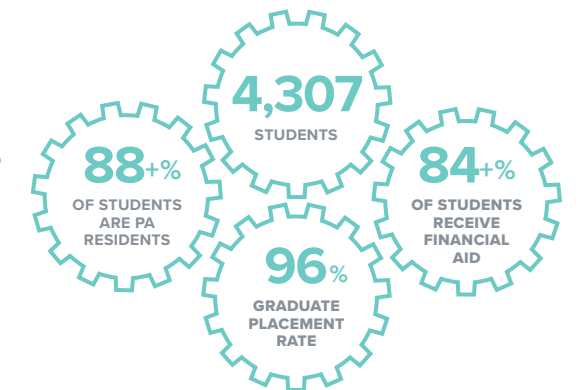
- Advancing local food security
- Expanding broadband access
- Advising land-use decisions
- Administering 4-H Youth Development Program
- Engaging almost 11,000 community volunteers

## 3 PENNSYLVANIA COLLEGE OF TECHNOLOGY

Pennsylvania College of Technology, a special mission affiliate of Penn State and a national leader in applied technology education, offers STEM-focused programming in high-demand career fields crucial to the needs of Pennsylvania's business and industry employers

Offers signature instruction in diverse and much-needed programs like:

- Polymer Engineering Technology
- Physician Assistant Studies and Nursing
- Information Assurance & Cyber Security
- Heavy Construction Equipment Technology
- Construction Management
- Welding & Fabrication Engineering Technology



## 4 PENN STATE HEALTH & PENN STATE COLLEGE OF MEDICINE

Penn State Health is a multi-hospital health system committed to providing quality, high-level care to patients and communities across the entire central Pennsylvania region.

State funding supports various health-related initiatives and programs that ensure access to quality health care and research including:

- Medical Assistance for Academic Medical Centers
- Support for the College of Medicine's Regional Campus (University Park)
- Regional Cancer Centers (Penn State Cancer Institute)
- Tobacco Settlement Fund Commonwealth Universal Research Enhancement (CURE) funding
- Hemophilia, Cystic Fibrosis, Adult and Pediatric Sickle Cell, and Spinal Bifida
- Primary Health Care Practitioners (Area Health Education Center and Penn State's Office of Rural Health)

### PENN STATE HEALTH BY THE NUMBERS:

- Over **2 million** outpatient visits per year
- Over **19,700** employees
- More than **2,450** physicians & advanced practice providers
- **225** outpatient locations
- **5** adult acute care hospitals; **2** specialty hospitals; **1** children's hospital

Through the ongoing development of Penn State College of Medicine's University Park Campus we are training medical students, with special focus on primary care and rural medicine—an area of special need in the northern tier of the state.

Penn State Health contributed community benefits with a total value of **\$156.7 million** in FY 2022 through effective programs, unreimbursed Medicaid costs, charity care and other services for underserved and marginalized populations.

Penn State Health's total (direct & indirect) economic benefit to Pennsylvania's economy in FY2022 was nearly **\$7.76 billion** based on regional economic multipliers.

*Bureau of Economic Analysis, U.S. Department of Commerce/Hospital & Healthsystem Association of PA*

**Our mission is to improve health through patient care, research, education and community outreach.**

## 5 INVENT PENN STATE

The Invent Penn State LaunchBox & Innovation Network provides access to no-cost business startup support. These services are offered in partnership with regional economic development authorities and are tailored to meet the unique needs of each community.

### INVENT PENN STATE PROVIDES:

- Coworking space
- Accelerator programs and pitch competitions
- Speaker series and access to experts and mentors
- Legal and IP advice through the Penn State Law Clinics

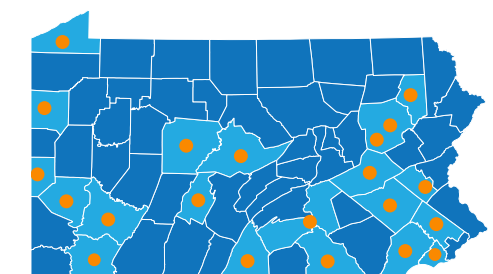
THIS NETWORK COLLABORATES WITH



to support small to mid-size businesses

### INVENT PENN STATE HAS:

- Supported over **7,000** entrepreneurs
- Helped start **411** new Pennsylvania companies
- Graduated **819** startups from accelerator programs
- Created **528** new product development projects and **515** jobs



**96%** of Pennsylvanians live or work within 30 miles of a LaunchBox or innovation space